



Niagara / DLG-85

Shower Cabin Installation and User's guide

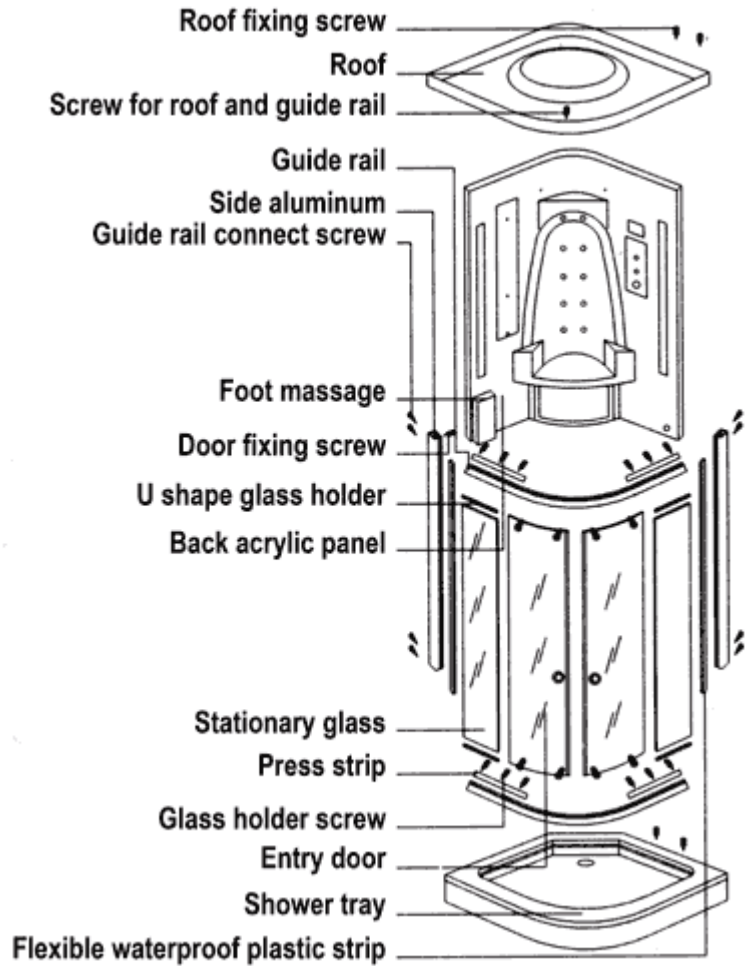


I. Mounting Preparation

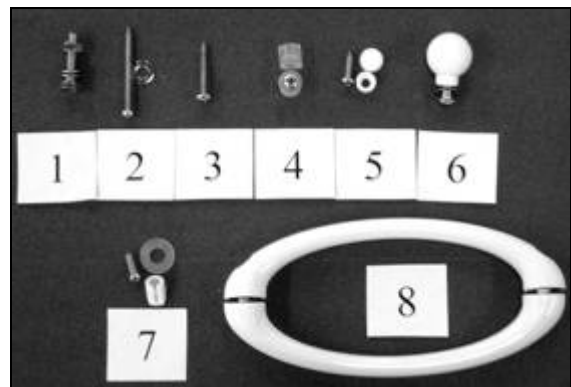
1. After opening the case, read this introduction carefully, check all the packed parts, examine the shower cabinet for shipping damage. If the unit has been damaged or has a finishing defect, please contact your local distributor within 2 business days. Please note that DreamLine Guarantee will not cover shipping damage or such finishing defects once the unit has been installed. Your distributor's responsibility for damage in transit is limited after the shower package has been transferred to the transportation company, so you may have to contact the transportation company directly to report damage. Contact your distributor or DreamLine if you have any questions.
2. You should make sure that the floor is leveled and solid and will be able to support the total weight of the unit and its occupant. You should also consult your local building codes on questions on installation compliance standards.
3. Install all of the required plumbing and drainage before securing the shower. Use a competent and licensed (if required by local code) plumber for all plumbing installation.
4. Please insure that prior to the installation the floor is leveled and the walls are at right angles. While some adjustment in leveling of the tray is possible, irregular floor level or improper angle of side walls will result in serious problems for your installation.
5. Necessary Tools: Conventional woodworking tools, Screwdriver, Silicone sealant, Electric drill, Regular drill bits (1/8", 7/64"), Phillips screwdriver, Level, Measuring tape, Pencil and Stepladder. Bear in mind that you will need at least two people to assemble the unit.

II. Packing List

- Roof cover with tropical rain shower (1 Set)
- Back acrylic panel (1 Set)
- Tray (1 Set)
- M6X25 Screws, Nuts, Washer (20 Sets)
- Resin bar (4pcs)
- U shape plastic strip (4Pcs+2pcs)
- Side Frame and Wall Profile (1 Pc each)
- Bend Rail and Guide Rail (2Pcs each)
- ST4.2x25 Tapping Screw (10Pcs)
- Door fixing screw ST4.2X16 (12pcs)
- Fixing Bend Glass Door (2Pcs)
- Walking Glass Door (2Pcs)
- Handle (1 Pairs)
- Foot Massager (Metal Flexible Connecting Pipe 1 Pc attached)
- Potable Showerhead (Metal Flexible Connecting Pipe 1 Pc attached)

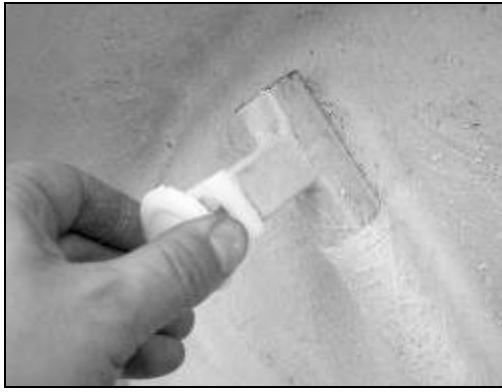


Parts



Tray pre-installation instructions





1. Choose the place where you will locate the tray, mark it because you may need to move it out from the position for better assembling procedure.
2. Unwind the legs to level the tray in case the surface is uneven. Skirting panel is removable, so it gives you the access to the drain in case there is a need for service.
3. Check on the drain if it fastened tight enough to make sure it won't leak after complete tray installation.
4. Check all the hose connections to prevent leakage. Your plumber may want to replace the flex hose to hard PVC pipes which is also possible.



One of the ways on how to change flex hose to hard PVC pipes:

Disconnect the flex hose from the shower drain unit. Fasten the 1 ½" hard PVC pipe to the drain. Using the trap adaptor with washer and plastic nut fasten the PVC pipe to the adaptor from 1 ½" to 2".

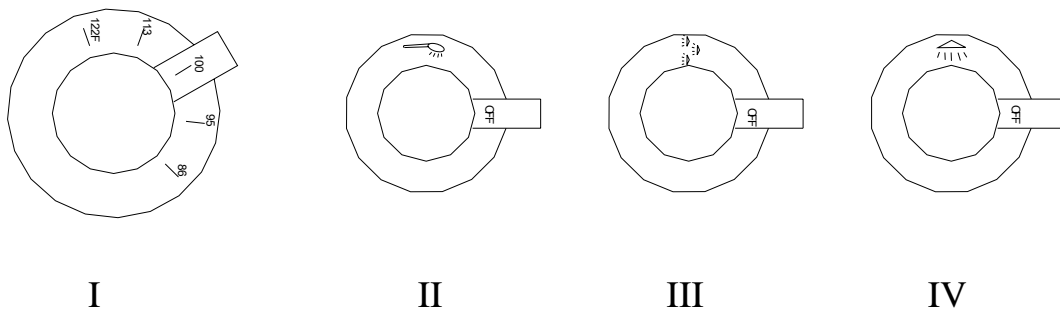
III. Mounting Procedure

1. Clean the surface of the tray and the back acrylic wall. Apply a layer of silicone and fasten the back acrylic wall to the tray using bolts (part #1) (Step 1, 2).
2. Clean the surface of the acrylic wall sides and apply a layer of the silicone (Step 3,4).
3. Using part #3 fasten the metal profiles to the acrylic back wall (Step 5).
4. Clean the surface of the front part of the tray and apply a layer of silicone (Step 6).
5. Using the part #2 secure the bottom guide rail to the metal profiles, making sure the screws go into the designated threaded holes in the guide rail (Step 7,8).
6. Attach the flexible waterproof plastic strip to the edge of the stationary glass and insert the glass into the

metal profile (Step 9). Push it all the way inside the metal profile so that the strip is completely inserted and prevents from water leakage (Step 10).

7. Repeat the same steps with the second stationary glass.
8. Mount the top guide rail onto the glass assembly (Step 11, 12).
9. Fasten the rubber door stopper using part #4 (Step 13, 14).
10. Gently slide the doors from the inner middle of the top and bottom guide rail (Step 15). Adjust the rollers if necessary.
11. Place the roof on the top guide rail and fasten it with bolts part #1. Make sure you put silicone in between the guide rail and the top.
12. Install the parts such as foot massager, hanging it on the preliminary fastened knobs (part #6) Step 16, 17.
13. Connect all the pipes and flexible showerhead (Step 18, 19).
14. Secure the door handles (part # 7, 8) Step 20.
15. Seal the joints between the metal profiles, guide rails and the tray.
16. According to the operating instructions, have a thorough check on the water supply pipes, and the shower enclosure.
17. Make sure all the preparation work is completed. Have a water supply test. Make sure the unit operates at its normal conditions, and then move the mounted enclosure to the right position.

IV. Usage of the Controls



- When the function switch is placed on Position I, adjust the water temperature;
- When the function switch is placed on Position II, multi-beam hand shower enabled;
- When the function switch is placed on Position III, the back panel massage jets and foot massage will be enabled;
- When the function switch is placed on Position IV, the deluxe large size rain shower will be enabled;

V. Sealing:

Apply clear silicone water sealant around the outside perimeter of any fixed shower components (horizontally between bottom of any fixed side glass panels and tray, as well as vertically between the wall, wall profiles and any side glass panels).

NOTE: Allow 24 hours for the silicone to set before testing or using the shower.

NOTE: Improper application of silicone sealant may cause your shower to leak.



Step 1



Step 2



Step 3



Step 4



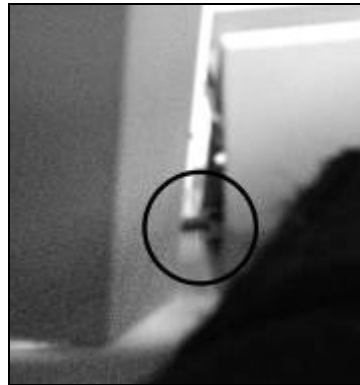
Step 5



Step 6



Step 7



Step 8



Step 9



Step 10



Step 11



Step 12



Step 13



Step 14



Step 15



Step 16



Step 17



Step 18



Step 19



Step 20